

Sailing Instructions for the



APC Logistics



2016 Brisbane to Gladstone Multihull Yacht Race

Race Start: *Easter Friday 25th March 2016*

2016 Brisbane to Gladstone Multihull Yacht Race

Race Organiser: *Multihull Yacht Club of Queensland.*



APC Logistics is one of Australia's largest independently owned, International Freight Forwarders and Customs Brokers. Since 1974 our goal has been to provide exemplary service.

We have continued to grow and win business by doing more for our clients with innovative and flexible freight solutions.

Please thank and support our valued corporate partners:



to Gladstone Multihull Yacht Race



QUANTUM SAILS™
TO THE NEXT CHALLENGE.



Our World is Water



CHOPPERLINE

1 Rules

The race shall be conducted pursuant to:

- a) The 2013-2016 Racing Rules of Sailing (RRS of the International Sailing Federation)
- b) The Yachting Australia Special Regulations (Blue Book 2013-2016) Category 2
- c) The prescriptions of Yachting Australia
- d) The MYCQ Sailors Handbook 2016
- e) OMR Rating rule where applicable
- f) The Notice of Race (NOR) and
- g) These Sailing Instructions (SI)
- h) The International Rules for Prevention of Collisions at Sea shall replace the ISAF rules Part 2, between the official hours of Sunset and Sunrise. A breach of these regulations will result in the offending vessel having a penalty applied.

2 Changes to RRS

- a) RRS 50.2 – Fixed and retractable spinnaker poles will be permitted for the purpose of setting asymmetrical spinnakers.
- b) RRS 50.3 - Bowsprits may be used to secure the tack of a spinnaker.

3 Safety Requirements

Yachts must comply with current YA Special Regulations (Blue Book 2013-2016) **Category 2 including the following YQ approved variations** and sections 14 & 15 from the MYCQ's Sailors Handbook 2016 all of which form part of these Sailing Instructions.

3.01.1 (a) add For Multihulls “The scantlings of the boat shall be strong enough to bear the stresses induced by the sea and wind in severe conditions that could be met for the duration of the race whether upright or inverted. Hulls shall be watertight and sufficiently buoyant such that the craft will remain afloat with one hull flooded”

3.20.2 Multihulls shall have provision to pump out all watertight compartments with a volume exceeding 0.3cu m except those filled with impermeable buoyancy.

Add a clause 3.25.4(e) All boats shall be fitted with a speaker facing towards the cockpit crew when in normal sailing position

3.25.6 & elsewhere as a general catch all requirement “For multihulls only all Safety equipment shall be accessible without requiring full immersion of a crew member from a normal or inverted position

Revise clause 4.18.3 with “For multihulls only, stowage location should be accessible from a normal or inverted position without requiring full immersion of a crew member e.g. near transom or re-entry hatch

4.20 Add “for multihulls shall be accessible without requiring full immersion of a crew member from a normal or inverted position”.

4.21.1(a-b) & 4.21.2 Add “for multihulls shall be able to be quickly & easily deployed”

Specific attention is drawn to Special Regulation 3.24.5(d) and competitors are advised that the MYCQ Sailing Committee has determined that the minimum fuel to be carried at the start of the race will be as per 3.24.5(c)

Competitors are reminded that Safety is the sole responsibility of the Skipper and Crew and that all entrants must complete the Safety Inspection Checklist.

All yachts will be inspected prior to the race. The Safety Inspections of all entrants will be carried out between the 11th and 22nd March, entrants shall contact the race director to book a time.

Yachts which have not been inspected will not be registered as starters.

MYCQ reminds all Entrants that ocean racing can be a dangerous sport and that:

All those taking part in the races do so entirely at their own risk and their own responsibility. The MYCQ, its members & race organizers are not responsible for the seaworthiness of any yacht whose entry is accepted, or for the adequacy of its equipment or crew. By paying the required fee an entrant acknowledges that they release the MYCQ, associated Yacht Clubs, their members & Race Organizers from all liability whatsoever. Competitors are referred to fundamental rules part 1 YA 2013 - 2016. The race organizers reserve the right to reject or rescind any yacht's entry for any reason.

4 Aquatic Event Permit and Radio Communication

All participating vessels must comply with the requirements of the Aquatic Event Permit issued by Maritime Safety Queensland. The document, when received, will be displayed on the notice board in MYCQ/DPSS Clubhouse and on the website www.mycq.org.au

Specific to participants are:

- a) Radio communication protocols, as stated in the “**Sailing Instructions**” and issued by the Multihull Yacht Club of Queensland are to be **strictly adhered to** for this Race.
- b) **Brisbane Harbour Control is to be notified on VHF Channel 12 when the fleet is approaching the Main Channel (approximately one mile from M9) and when the last yacht has cleared the Fairway Beacon.**
- c) All participants to monitor VHF Ch 12 between M 9 and the Fairway Beacon for possible communication with large traffic.
- d) **Entering Gladstone Harbor.**
Approaching mark “S2” all yachts shall call Gladstone VTS on VHF 13 to identify the yacht, advise of entry to Gladstone Harbor and obtain shipping movements. Yachts shall maintain a listening watch on VHF 13 whilst in the harbor and approaching the finish except for (e) below.
- d) **At mark “G1” all competing yachts shall call VMR Gladstone on Ch 73 and advise their ETA at the finish, if no contact is made on Ch 73 try Ch 82. Also call Gladstone VTS on Ch 13 and advise that you are passing G1. Return to listening watch on Ch 13.**
- e) **At mark “A5” (approx. 1nm from the finish) call Gladstone VTS on Ch 13 and advise that you are passing A5.**
- g) **All competing yachts are to keep well clear of all commercial shipping whilst navigating in the Gladstone Harbor Shipping Channels.**
- h) All competing yachts are advised that there can be a lot of construction craft operating in Gladstone harbor. These craft have been requested to endeavour to keep clear of race yachts. The construction craft monitor VHF Ch 15.
- i) All competing yachts are advised that dredges may be operating in channels marked by virtual buoys and are not necessarily following visually marked channels.
- j) All competing yachts are to maintain a listening watch on VHF Channel 13 after passing S1/S2 beacons (Gladstone Harbour) until crossing the finish line which is situated off A7 Beacon (see notes 3 & 4). Competitors shall observe all Navigation Marks, except Shipping Channel Marks, unless specifically mentioned in these Instructions.
- k) All competing vessels and support vessels are recommended to have a radar reflector in place on entering Gladstone Harbor Limits.

All yachts should carry a copy of the Crisis Management Plan (downloadable from the website)

5 Documentation

The following documents must be signed and lodged with the Race Committee prior to the closing dates listed below.

- | | |
|--|-------------------------------|
| a) Entry Form with Entry Fees by | Friday 11th March 2016 |
| b) Safety Inspection Sheet by | Friday 11th March 2016 |
| c) Indemnity Agreement by | Friday 11th March 2016 |
| d) Crew list by | Friday 11th March 2016 |
| e) Gladstone Marina Mooring Permit | Friday 11th March 2016 |
| f) Gladstone Marina Credit Card Authorisation | Friday 11th March 2016 |
| g) Changes to crew list at least 2 hrs prior to race start. | |

6 Race Briefing

There is a compulsory skippers briefing on Wednesday 23rd March 2016. All crew, partners, MYCQ members and friends are recommended to attend as this is designed to also be a social evening. Hamburgers will be available, a Calcutta Sweepstake will be held with boats bought and bets laid on placegetters and the bar will be open. Official limited edition race shirts and club merchandise will also be available. This is a great opportunity to meet and socialise with fellow competitors and MYCQ members and officials. The evening commences at 1830 and the venue is the MYCQ / DPSS clubhouse on the northern arm of the Manly Harbour.

7 Divisions

OMR and Performance Rating

8 Promotion Material

Competitors, when racing, shall fly or display any promotional material as may be required by the MYCQ Sailing Committee. This may include carrying of tracking devices.

9 Handicaps

- OMR Division. Yachts entering the OMR Division must have a current OMR rating listed on the MYCQ on-line OMR register at www.mycq.org.au > Racing > OMR ratings > Download current ratings.
- Performance Ratings will be determined by the Race Committee.

10 Recording as a Starter

The initial sked between 1000 and 1030 hours on Friday 25th March will be conducted by the committee vessel on VHF channel 73. Competing yachts will declare their intention to start and number on board.

11 Marks

Laid Marks will be orange or yellow inflatable or high visibility conical buoys. Other marks of the course are Navigation marks as shown on the charts.

12 The Start

- a) The race warning signal will be given not before 1105 hrs on Friday 25th March 2016.
- b) The Start Line will be as per the attached map.
- c) The Race will be started in accordance with YA Blue book Part 3, Rule 26.
- d) The Start Line will be between the main mast on the Committee Vessel flying the MYCQ burgee and stationed at the starboard end of the line and a transit to the end of the Sandgate pier. There may be a clearance mark (barging buoy) on the Committee Vessel and their will a limit mark at the port end of the line to allow vessels an escape route between the pier and the start line. Hence vessels starting the race must pass between the port limit buoy and the committee vessel clearance buoy, on a transit between the end of the pier and the main mast of the committee vessel.
- e) There will be four anchored marshal boats flying an MYCQ banner marking the exclusion zone for spectator craft.
- f) Rule 30.1 regarding Flag I shall apply.
- g) The class flag for all competitors is code Flag **Q**.
- h) Be aware that the monohull fleet will be starting on a **different** start line some three nautical miles offshore of the multihull start line at around 1100 hrs. Sound signals from their start may be able to be heard so attention should be paid to the flags on the Multihull Committee Vessel.

13 Recalls

- a) Individual recalls will be signalled in accordance with racing rule 29.1
- b) General recalls will be signalled in accordance with racing rule 29.2

14 Communications

Position reporting during the 2016 race will be carried out primarily by Yellow Brick Trackers. It is still mandatory under the 2013-2016 Racing Rules of Sailing (RRS of the International Sailing Federation) for yachts to carry properly functioning VHF Radios. Radios will be used for position reports as required and other safety requirements.

Pre-Race Radio Check

Pre race radio checks will be carried out during the week prior to the start. Entrants will be contacted individually to arrange a time. At the appointed time the yacht will be contacted on VHF Channel 81 to assess signal strength (transmit and receive). If signal strength is deemed to be inadequate then the onus is on that yacht to correct the fault prior to the start of the race.

Satellite trackers will be the primary position reporting system and must be checked regularly to ensure that they are working correctly. They report at 15 minute intervals and MYCQ will display the positions on our website.

All competing yachts must monitor VHF Ch 16 when not required to use another channel by these Sailing Instructions. VHF Ch 16 has coverage for the entire course and is only to be used in an emergency. It is suggested that where radios have a DUAL monitoring facility that 16 and 12 or 80 from Brisbane to Double Island Point or 16, 13 or 82 after passing Lady Elliot Island should be monitored.

Gladstone race control will compile sked information to record actual positions and handicap positions on OMR and PR from tracker data at at least 6 hourly intervals starting from 1800 hrs on Friday 23rd March until all yachts have completed the race. This information will be posted on the website. Yachts actual positions will be shown on the Yellowbrick tracker page on the website for the duration of the race.

All yachts shall report wind strength and wave heights to MYCQ Race Control when wind strength exceeds 40 kts True. Contact may be made by radio channel 73 when within range of the start or finish lines or mobile phone if in range. The Race Officer phone number is 0409 490 595. The reporting vessel should also convey the message to the race fleet using channel 16, broadcast as a general message to the Brisbane to Gladstone Multihull Fleet, which should take the form:

“SECURITE, SECURITE, SECURITE, to all yachts competing in the Brisbane to Gladstone Multihull Yacht Race, this is (yacht name), be informed that I am experiencing true wind exceeding 40knots, my position is (give Lat and Long).”

Registering as a starter:

On Friday 23rd March 2016 call Multihull Race Control on VHF Ch. 73 to register as a starter and state sail number and number of persons on board.

The onus is on the competitor to ensure that these communication protocols are met. Failure to do this may result in disqualification or heavy costs if it is presumed that a yacht is in distress and a search is started.

15 The Course

Navigators should check the exact location of marks & should exercise caution if using GPS systems.

Co-ordinates listed are approximate only.

From the start (Refer to attached map)	Approx. Position	27° 19.2 S	153° 05.2 E
Otter Rock (Fl G 2.5s)	Leave to Port	27° 16.58 S	153° 06.79 E
Garnett Rock Stb Lateral Buoy	Leave to Port	27° 14.505 S	153° 07.408 E
Mark A Orange Buoy (Exclusion Zone)	Leave to Stb	27° 13.1 S	153° 08.4 E
Multihull Turning Mark (Yellow conical c/ pink cover)	Leave to Stb	27° 12.9 S	153° 08.0 E
Mark C Orange Buoy (Exclusion Zone)	Leave to Stb	27° 13.1 S	153° 08.6 E
M 8 Beacon (Fl R 2.5s)	Leave to Port	27° 12.1 S	153° 17.2 E
South Cardinal (old M9)Q6+L Fl 15s	Leave to Port	27° 09.5 S	153° 20.1 E
East end Spitfire Chnl Beacon Fl G 1.5s	Leave to Port	27° 03.4 S	153° 17.7 E
West end Spitfire Chnl Beacon Fl G 1.5s	Leave to Starboard	27° 02.9 S	153° 16.0 E
NW 12 West Cardinal (Q 9 15s)	Leave to Starboard	27° 02.3 S	153° 15.4 E
NW 3 Green Beacon (Fl G 2.5s)	Leave to Starboard	26° 57.8 S	153° 13.3 E
NW 4 Red Beacon (Fl R 4s)	Leave to Starboard	26° 51.5 S	153° 09.2 E
NW Fairway Safe Water Mark (ISO 4s)	Leave to Port	26° 48.8 S	153° 10.5 E
Breaksea Spit North Cardinal (Qk)	Leave to Port	24° 21.1 S	153° 08.9 E
Lady Elliot Is Coral Island (Fl 7. 5s)	Leave to Port	24° 06.0 S	152° 43.5 E
S2 Red Beacon (Fl R 2.5s)	Leave to Port	23° 54.0 S	151° 30.5 E
S10 Red Beacon (Fl R 4s)	Leave to Port	23° 55.7 S	151° 28.8 E
S12 Red Beacon (Fl R 4s)	Leave to Starboard	23° 55.8 S	151° 27.9 E
S14 Red Beacon (Fl R 4s)	Leave to Starboard	23° 55.9 S	151° 27.4 E
S16 Red Beacon (Fl R 4s)	Leave to Starboard	23° 55.9 S	151° 26.6 E
G2 Yellow Bcon (Q & Fl Y 4s)	Leave to Starboard	23° 53.3 S	151° 21.9 E
A8 Red Buoy (Fl R 4s)	Leave to Port	23° 49.8 S	151° 15.3 E

To the Finish (see paragraph 15)

NOTES:

1. Don't be confused by monohulls. They may not be following exactly the same course (e.g. they have a different start line and are leaving the Western Spitfire Beacon to Port)
2. Spitfire Channel has in past years been marked by buoys this year the marks of the course are beacons the buoys can be ignored.
3. Marshall boats, anchored to assist with spectator control, are not marks of the course.

TIME LIMIT: Nil

RACE DISTANCE: 308 nm

16 The Finish

a) The Finishing Line is an imaginary line between A7 beacon (Fl Y 4s 23° 49.51 S 151°15.34 E) to Starboard and two red vertical strip lights located on the land at approximately 23°49.85 S 151°15.00 E to Port. Yachts shall cross this line leaving the limit mark, a yellow buoy (Fl.Y.3s) to Port. This yellow buoy is at approx position 23°49.75 S 151°15.10 E. Refer to attached map.

NOTE. Due to tidal flows the limit mark may not be exactly on the Finish Line.

b) After finishing, yachts should leave the Laid Yellow buoy to Port and proceed to the marina between this buoy and the marina breakwater to keep the Finishing Line clear.

c) Crews on yachts finishing at night shall illuminate their sail number to identify the yacht. Crews are also requested to identify the vessel immediately in front of them and behind them and note these names on the Race Declaration form supplied.

d) After finishing, call the Marina office on VHF 82 for your berth allocation.

e) Within 2 hours of crossing the finish line the Skipper of each yacht shall lodge a Race Declaration with MYCQ Race Control on the form supplied and return the Yellowbrick Tracker. The Race Control desk is on the ground floor of the Port Curtis Sailing Club and there may also be MYCQ officials roving who you can lodge the declaration form and tracker with. It is the Skippers responsibility to ensure correct lodgement and return of the tracker, failure to do so may result in disqualification.

f) Yachts not lodging a declaration shall be regarded as a DNF.

17 ETA

Yachts shall notify VMR Gladstone on CH73 when abeam of **G1** (Gatcombe Head) and navigators shall supply their ETA at the finish line. Please ensure that your ETA is repeated back to you by the officials and you also record this time on your Race Declaration Form in the space provided.

18 Alternative Penalties

The 720° turns penalty, part 4 Rule 44.1 and the 360° turn penalty, part 3 Rule 31.2, shall apply. If appropriate the Race Committee may invoke time penalties.

19 Protests

Protests complying with Part 5 Section A, YA Racing Rules 2013 – 2016 must be lodged, in writing within 2 hours of the protesting yachts finishing time.

20 Withdrawals

Any yacht withdrawing from the race must notify Race Control by VHF or phone 0409 490 595 as soon as possible and continue with the Trackers and VHF or other communications until safely in port and officially signed off.

21 Trophies

Line Honours,
1st OMR, 2nd OMR, 3rd OMR,
1st Performance Rating, 2nd Performance Rating, 3rd Performance Rating,
Race record (if applicable)
1st Over Start Line,
Wooden Spoon,
Most Valuable Crew member, and
Nearest ETA.

22 Presentation and Trophies

Presentation of Prizes and Trophies will take place in the Port Curtis Sailing Club in Gladstone at 1300 hours on Sunday 27th March. The Club is sponsoring an open bar to \$1000 so don't be late!! Competitors and crews are urged to support this function and to support the sponsors who have generously provided funds and trophies.

23 Attachments

The following attachments form part of the Sailing Instructions

- a) Race Start, Moreton Bay, Gladstone Harbour and Finish Sketches. These sketches are intended as guides only and are not to be used for navigation.
- b) Competitor List
- c) Contact Information

24 Race Documentation

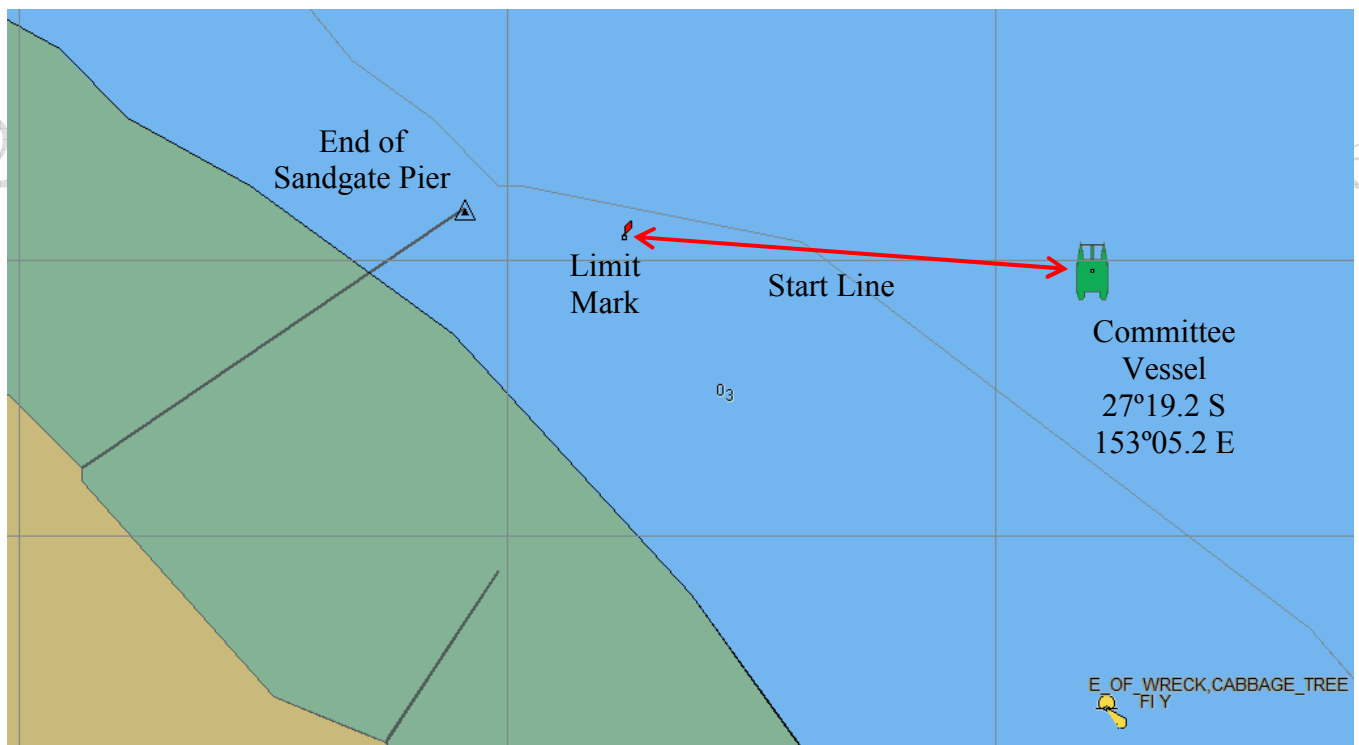
Entry Forms, Crew List Forms, Changes to Crew List Forms, Safety Inspection Sheet, Race Declaration Forms and Indemnity Forms are also available on our Website:

www.mycq.org.au

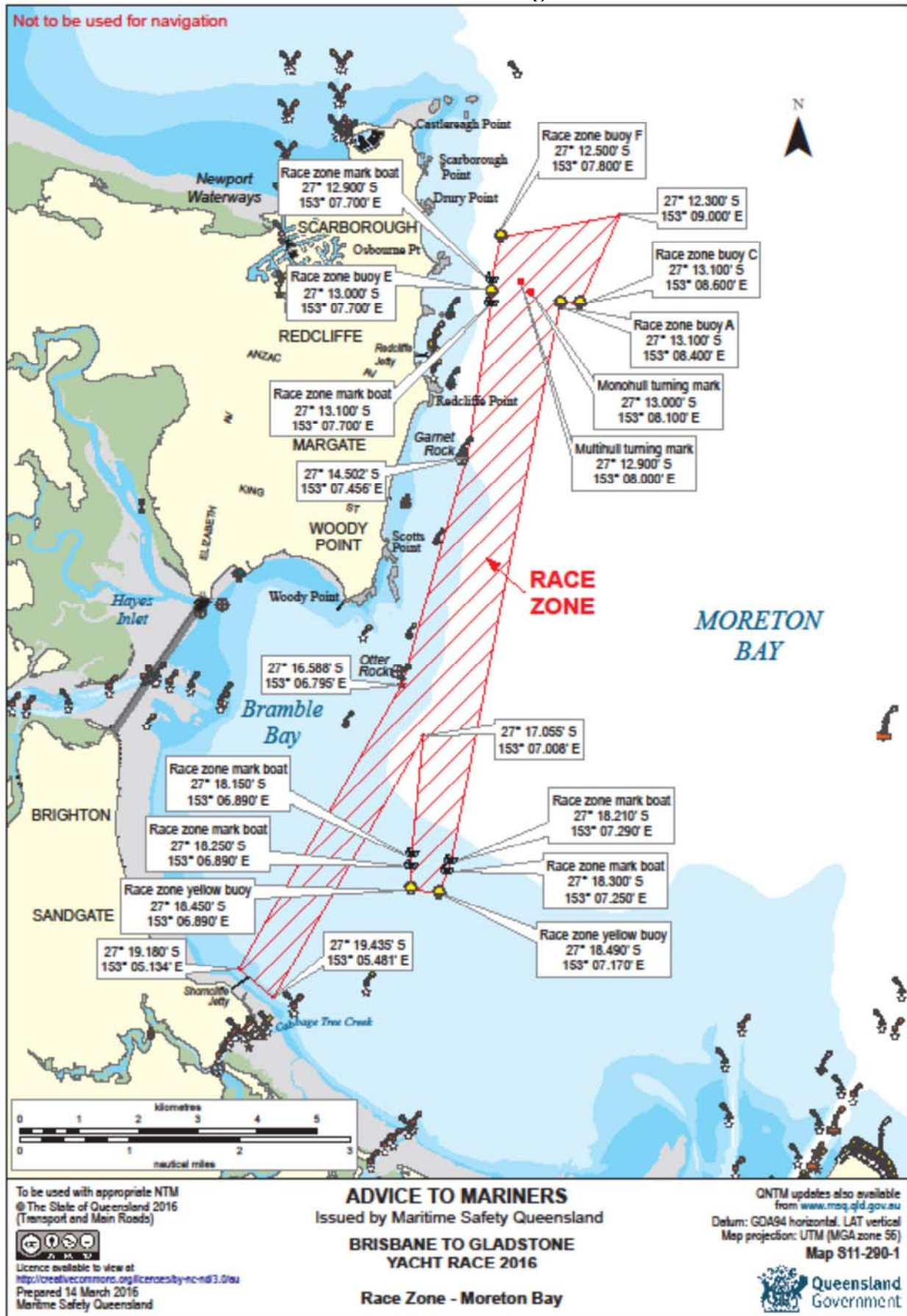


Attachments

Race Start Sketches



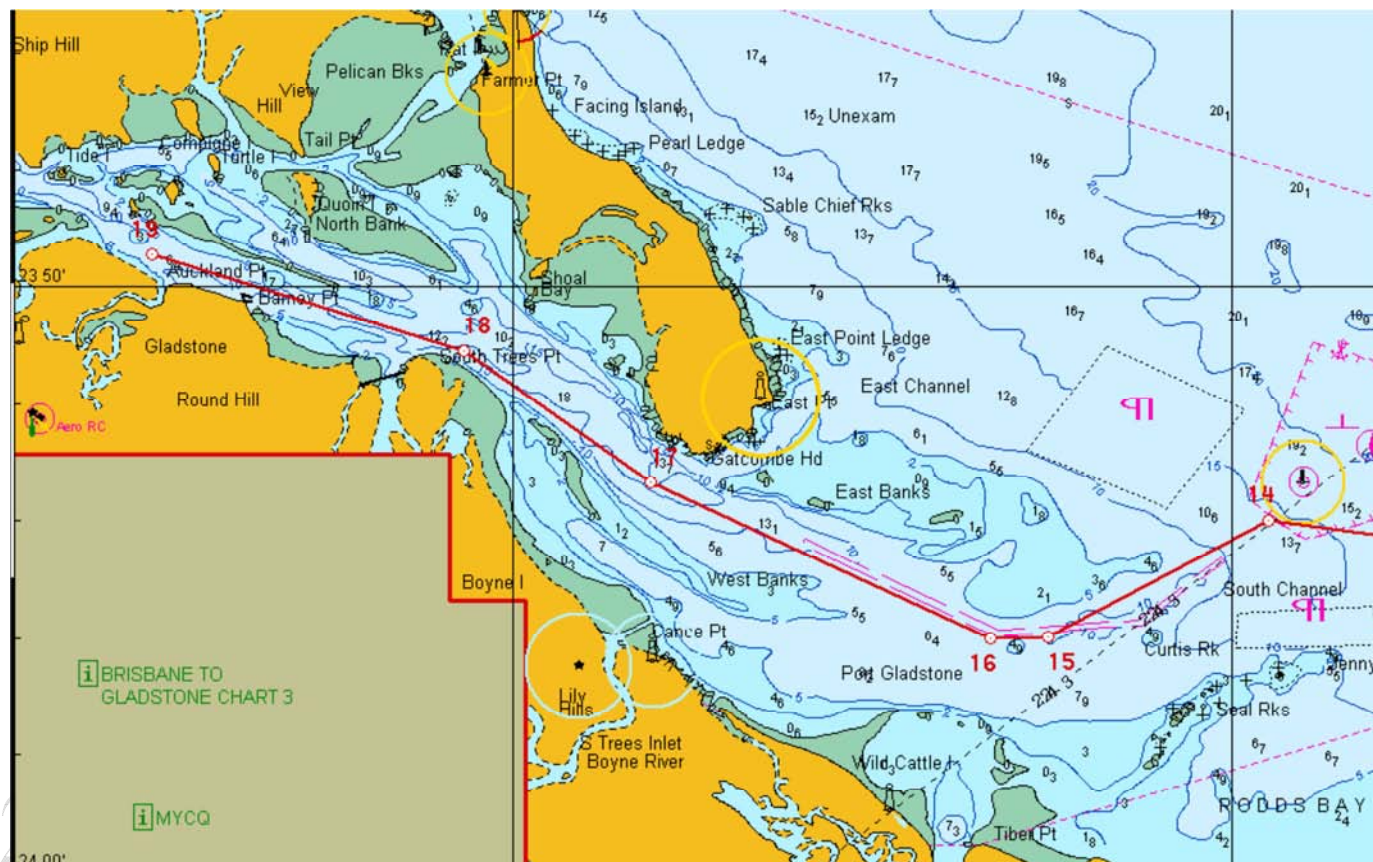
The below is the Advice to Mariners which shows the general start area and exclusion zones:



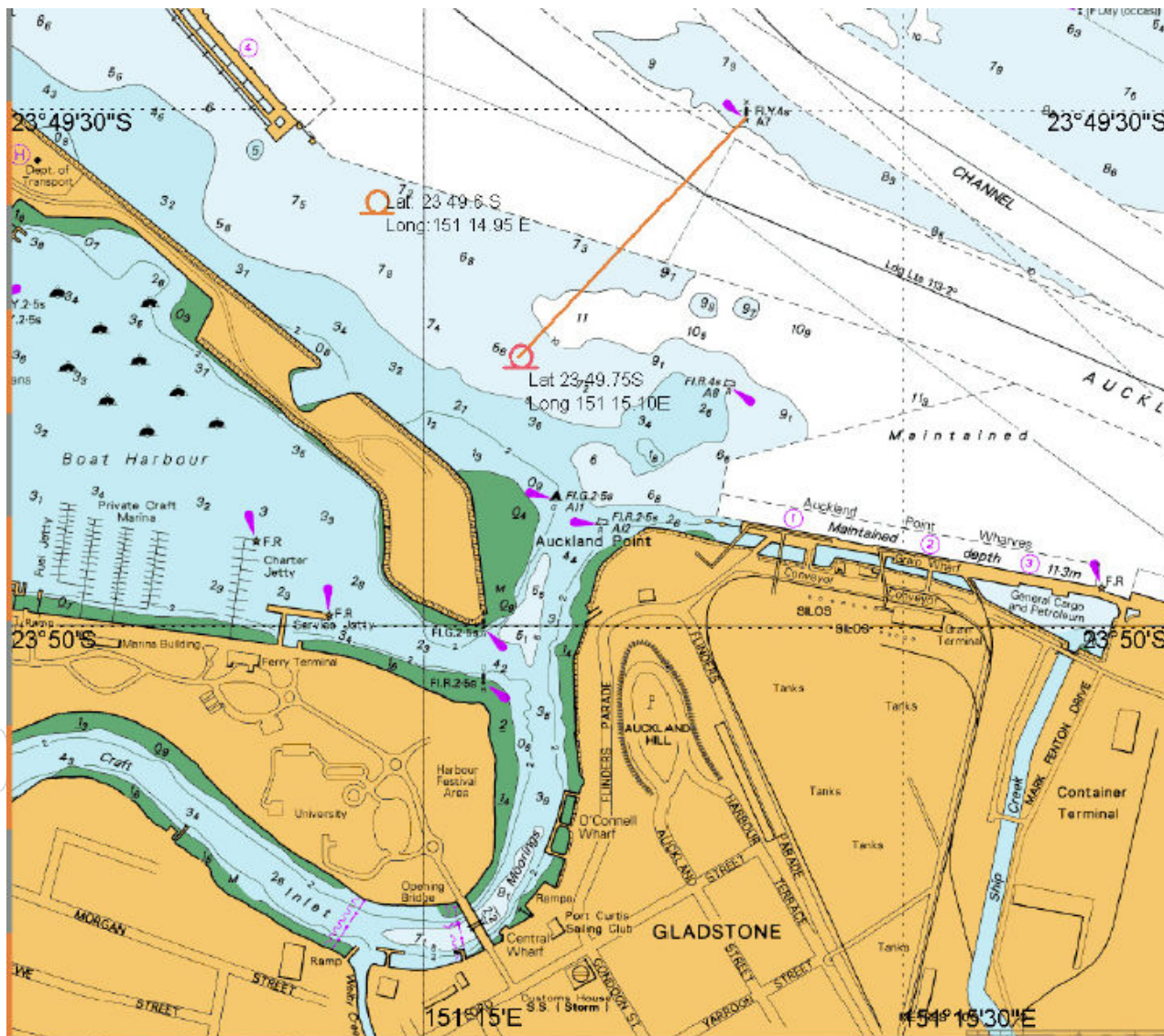
20

ice

Gladstone Harbor Sketch



Finish Area Sketch



Contact Information

Brisbane to Gladstone Race Committee

Title	Name	Mobile Phone Number	Satellite Phone
Race Manager	Mike Hodges	0411 888 850	0424 211 478
Officer of the Day	Alasdair Noble	0409 490 595	0499 012 986
Gladstone Race Office	Allan Bolt	0438 866 921	
Start Vessel Skipper	Richard Jenkins	0498 228 656	
Officer of the Day	Call "MYCQ Fleet Race Officer" on channel 72		

Queensland Police Service

Title	Business Hours Phone Number	Address
O.I.C. Water Police Qld	3895 0333	Queensland Water Police Howard Smith Drive Lytton

AMSA and AusSAR's Rescue Coordination Centre (RCC Australia)

Title	Business Hours Phone Number	Address
Duty Officer AusSAR Australia	1800 641 792 or 02 6230 6811 Fax 1800 622 153	25 Constitution Avenue Canberra City ACT (As above also) OR GPO Box 2181 Canberra ACT 2601

Maritime Safety Qld Marine Operations Bases

Brisbane	Pinkenba 4008	3860 3500
Mooloolaba	Old Pilot Station, Mooloolaba 4557	5477 8425
Urangan	Buccaneer Av., Urangan 4655	4194 9600
Bundaberg	46 Quay St, Bundaberg 4670	4131 8500
Gladstone	Centre Point Building, Goondoon St, Glad. 4680	4973 1200

Vessel Tracking System

Port of Brisbane VTS (Vessel Tracking System) – Channel 12 VHF

Port of Gladstone VTS (Vessel Tracking System) – Channel 13 VHF

The relevant VTS stations are the principal point of contact for vessel tracking within the pilotage areas, and vessels should register with the relevant VTS as required in the Port Procedures and the Sailing Instructions.

The VTS control rooms monitors VHF radio 24 hours per day and should be notified of any damage to aids of shipping either caused by or observed by a race entrant.

VMR / Coastguard

Note: All VMR / Coastguard facilities monitor VHF Channel 16

Name	Operating Hours	VHF Channels	Phone Number
VMR Brisbane	0600-2200	67,73, 81	3396 5911
Redcliffe Coastguard	0600-2100	21,67,73,81	3203 5522
Bribie Island VMR	0600 – 1800	21,67,73,81	3408 7596
Caloundra Coastguard	0700 – 1700	21,67,80,73	5491 3533
Mooloolaba Coastguard	0600-2200	21,22,67,73,80,81	5444 3222
Noosa Coastguard	24hrs	80,22	5474 3695
Tin Can Bay Coastguard	0600-1700	80,82	5486 4290
Sandy Straits Coastguard	0700-1800	80,73,82	4129 8141
Hervey Bay VMR	0600-1800	73,22	4128 9666
Bundaberg VMR	0700-1800	22,67,80, 81	4159 4349
Round Hill VMR	As required	81,82,67	4974 9383
Gladstone VMR	0800-1800	67,82	4972 3333

Bureau of Meteorology

Title	Name	Business / After Hours Phone Number
Weather Bureau Brisbane		3239 8700
Weather Bureau Brisbane	Senior Forecaster 24 hrs	3239 8750
Alternative Phone Number	Senior Forecaster 24 hrs	3239 8602

Hospitals

Name	Phone Number
Royal Brisbane Hospital	3636 8111
Redcliffe Peninsula Hospital	3883 7777
Caloundra Hospital	5436 8500
Noosa Hospital	5455 9200
Maryborough General Hospital	4122 8222
Hervey Bay Hospital	4120 6666
Bundaberg Base Hospital	4152 1222
Gladstone Districts Hospital	4976 3188

Competitor List

The Boat Works



Boss Racing



Fantasia



Hasta La Vista



Morticia



No Problem



Renaissance



Top Gun

